

SEASON 1893.

J. L. TAIT, President.  
V. H. SURGNOR, Vice-President.

J. H. ALDEN, Treasurer.  
GALEN L. TAIT, Secretary.

# South Park Chautauqua

GROUNDS AND OFFICES . . . .

Garfield Boulevard (55th St.)  
and Washington Park

REFERENCE: ATLAS NATIONAL BANK,  
CHICAGO.

Chicago, June 17th 1893.

Albion W. Touger,  
Mayville,  
N.Y.

Dear Sir:

Yours of the 7th inst at hand and the truthful contents noted. The South Park Chautauqua was not projected without a complete canvass ~~of~~ of the situation in all its aspects, and the hearty commendation and cheering prophecies of many prominent men accustomed to judge of the conditions necessary to the attracting of people. A post mortem autopsy, however, reveals their and our poor judgment and the accuracy of your own in this matter.

While our own failure is mortifying, a knowledge of the recent collapse of many other institutions, among them one backed by such eminently successful men as Lyman J. Gage, L. G. Leiter, Potter Palmer, Pullman, Field, etc. in which half a million loss was sustained, is a

SEASON 1893.

J. L. TAIT, President.  
V. H. SURGHNOR, Vice-President.

J. H. ALDEN, Treasurer.  
GALEN L. TAIT, Secretary.

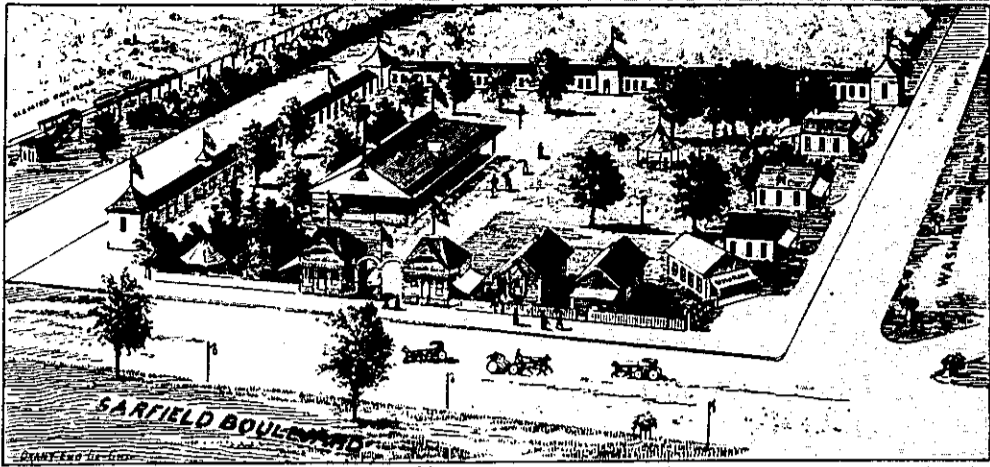
# South Park Chautauqua

GROUNDS AND OFFICES . . .

Garfield Boulevard (55th St.)  
and Washington Park

REFERENCE: ATLAS NATIONAL BANK,  
CHICAGO.

Chicago, ..... 1893.



slight solace to pride if not to flesh.

I send you a program as requested and  
am sending "cut".

With kindest respects to you and an abiding  
interest in your work and writings after  
correspondence with the author I am,

Sincerely,  
Galen L. Tait, Jr.

CHAUTAUQUA COUNTY NY HISTORICAL SOCIETY 2013