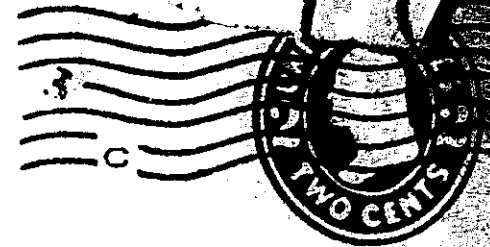
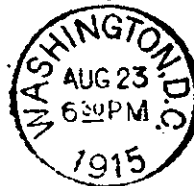


After 5 days, return to  
NATIONAL SOCIETY OF THE DAUGHTERS  
OF THE AMERICAN REVOLUTION,  
Memorial Continental Hall,  
WASHINGTON, D. C.



Mrs. Emma K. Tourgee.

Mayville, N.Y.

Chautauqua CO.

CHAUTAUQUA COUNTY NY HISTORICAL SOCIETY 2013

10714

CHAUTAUQUA COUNTY NY HISTORICAL SOCIETY 2013



MISS GRACE M. PIERCE, REGISTRAR GENERAL  
MEMORIAL CONTINENTAL HALL  
WASHINGTON, D. C.

August 23rd, 1915.

Mrs. Emma K. Tourgee,  
Mayville, N.Y.

My dear Mrs. Tourgee:-

Your letter of August 21st, has been received and in reply I would say that I am returning, herewith, the duplicate of your application paper in order that you may have it signed by the State Regent of New York who is Mrs. Benjamin F. Spraker, Palatine Bridge, N.Y.

If you are not personally acquainted with her it is customary to send her a letter of introduction from some Daughter who is or from your pastor or some prominent citizen.

The fee and dues of a member at large are three dollars for the first year and two dollars for each succeeding year.

The check should be made payable to and forwarded to the Treasurer General, Memorial Continental Hall, Washington, D.C.

Trusting to receive your paper at an early date, properly endorsed, I am

Very sincerely yours,  
*Grace M. Pierce*  
Registrar General, D.A.R.