

*Chautauqua County  
Historical Society*

*Box 47 - Welch*



*Photos of Welch development and grape industry*



The WELCH GRAPE JUICE CO.  
Watertown, New York  
Factory No. 1 in the background  
Factory No. 2 in the foreground  
see also 4725.tif  
Please show support for  
Country Walls.

47welch-001.tif



47welch-002.tif



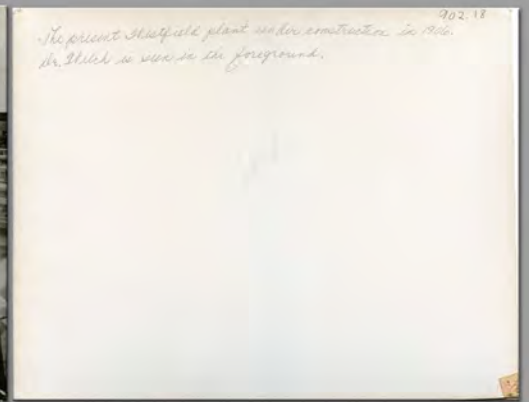
47welch-003.tif



47welch-004.tif



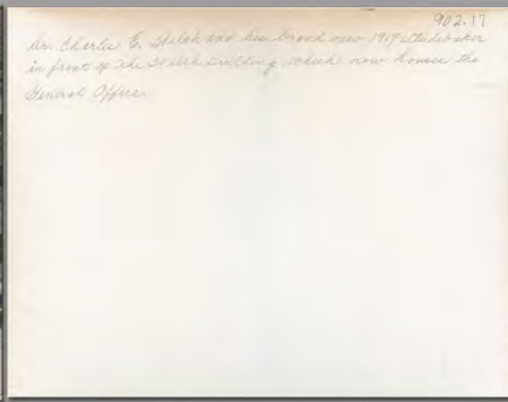
47welch-005.tif



47welch-006.tif



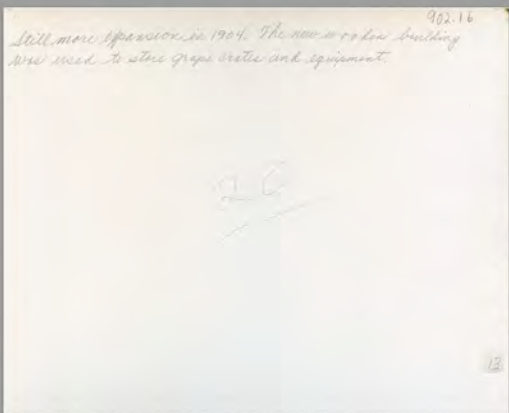
47welch-007.tif



47welch-008.tif



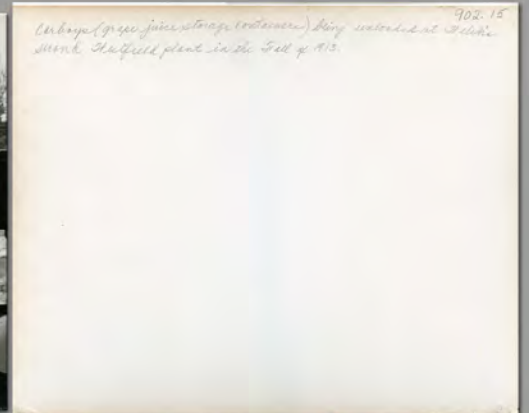
47welch-009.tif



47welch-010.tif



47welch-011.tif



47welch-012.tif



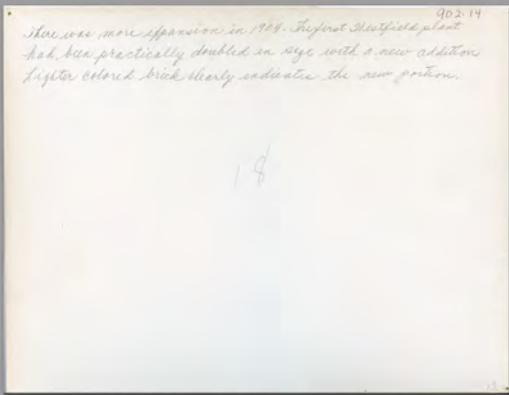
47welch-013.tif



47welch-014.tif



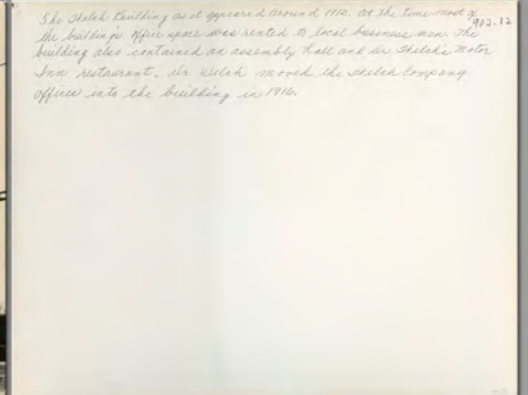
47welch-015.tif



47welch-016.tif



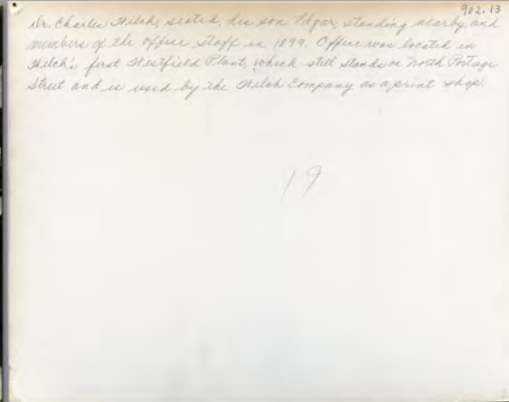
47welch-017.tif



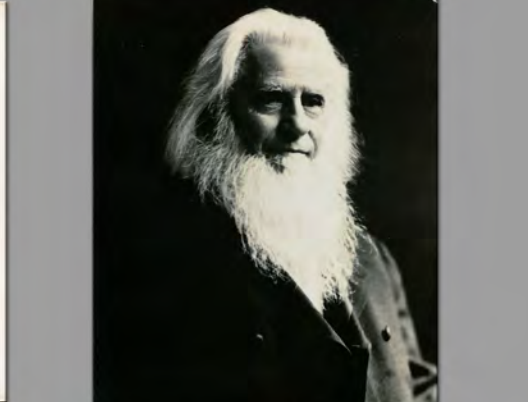
47welch-018.tif



47welch-019.tif



47welch-020.tif



47welch-021.tif



47welch-022.tif



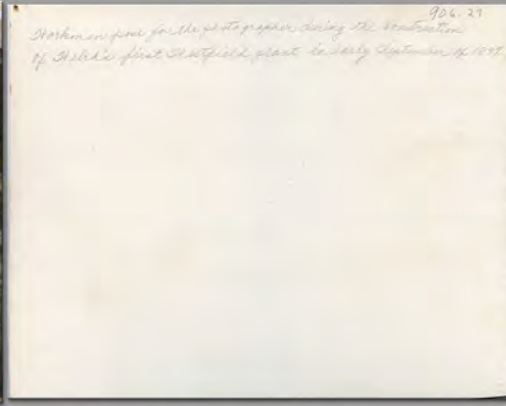
47welch-023.tif



47welch-024.tif



47welch-025.tif

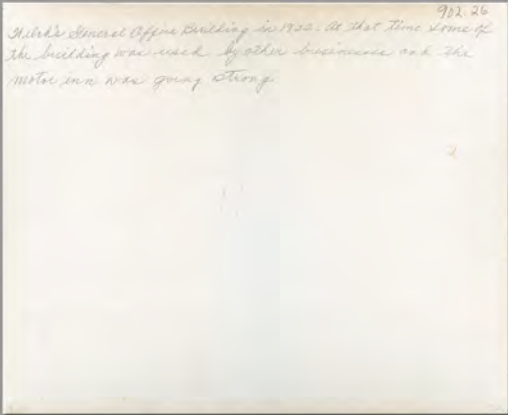


902.27  
Workers in place for the grape press during the construction  
of Welch's first Westfield plant in early September of 1905.

47welch-026.tif



47welch-027.tif

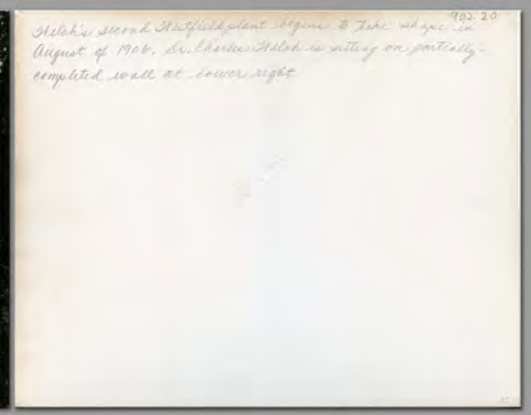


902.26  
Welch's General Office Building in 1932. At that time some of  
the building was used by other businesses and the  
motor inn was going strong.

47welch-028.tif

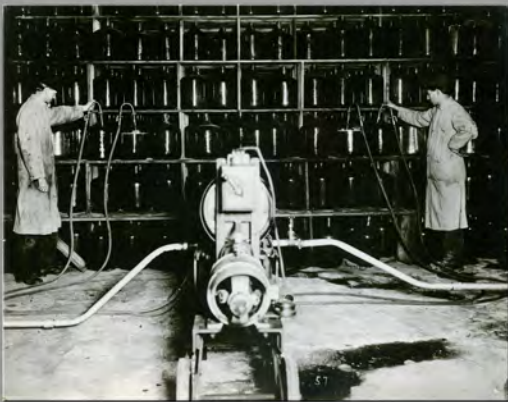


47welch-029.tif

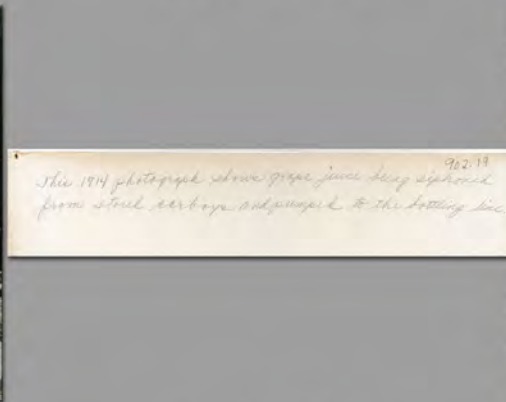


902.20  
Welch's second Westfield plant began to take shape in  
August of 1906. Dr. Charles Welch is sitting on partially-  
completed wall at lower right.

47welch-030.tif



47welch-031.tif

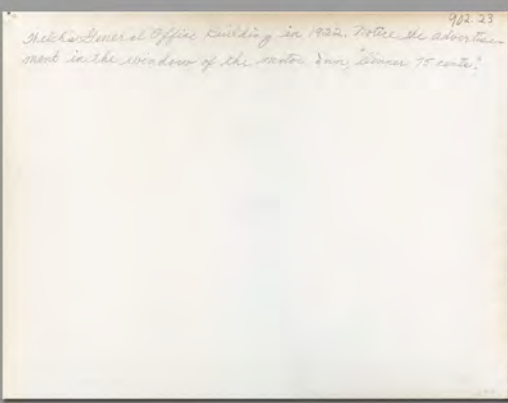


902.19  
This 1914 photograph shows grape juice being siphoned  
from steel barrels and pumped to the bottling line.

47welch-032.tif



47welch-033.tif

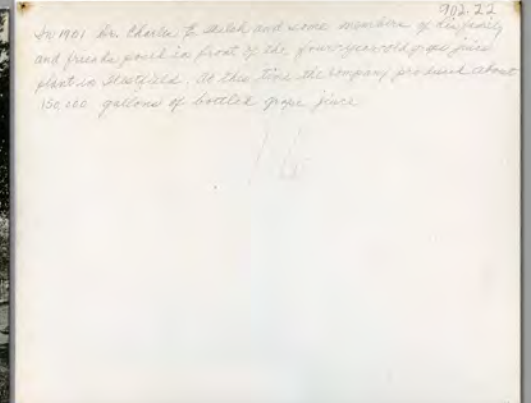


902.23  
Welch General Office Building in 1932. Notice the advertising  
signs in the windows of the motor inn across the street.

47welch-034.tif



47welch-035.tif



902.22  
In 1901 Dr. Charles F. Welch and some members of his family  
and friends paid in part for the four-year-old grape juice  
plant in Westfield. At this time the company produced about  
150,000 gallons of bottled grape juice.

47welch-036.tif

This is the way grapes were prepared for pressing at Welch's second Westfield plant in the years prior to World War I.

Siphoning grape juice from carboys for use on production lines.

Dr. Thomas R. Welch, the gentleman with the white beard in the left foreground, and his son, Dr. Charles E. Welch, wearing a white yachting cap, in a Westfield vineyard scene of 1902.

By 1901 The Welch Grape Juice Company was successful enough to begin expanding its Westfield plant. Here an addition is shown at the rear of the plant. Edgar Welch, son of Dr. Charles Welch, stands on the loading platform.

47welch-037.tif



47welch-038.tif



47welch-040.tif



47welch-041.tif



47welch-042.tif



47welch-043.tif



47welch-044.tif



47welch-045.tif



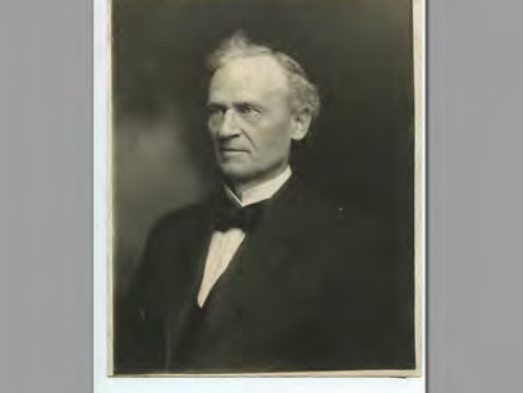
47welch-046.tif



47welch-047.tif



47welch-048.tif



47welch-049.tif



47welch-050.tif