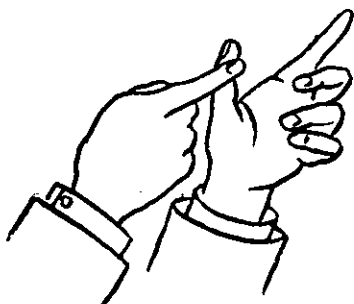


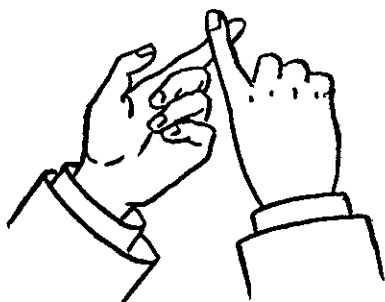
POINTS OF SUPERIORITY
OF THE
DAUGHERTY TYPEWRITER.

Visible Writing. . . .



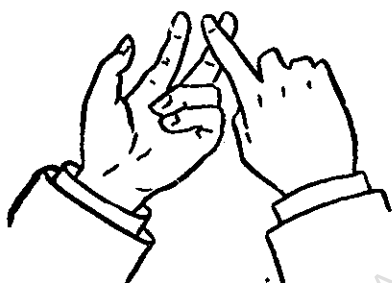
The fact that you can glance at your work at any time and see each letter and word gives you a confidence that will INCREASE your speed. You cannot appreciate it now, as you have been taught to work in the dark.

Simplicity



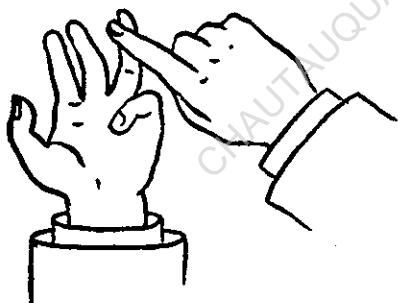
If you can attain the same results with one-fifth the number of parts, why use the complicated, old style writers?

Permanent Alignment.



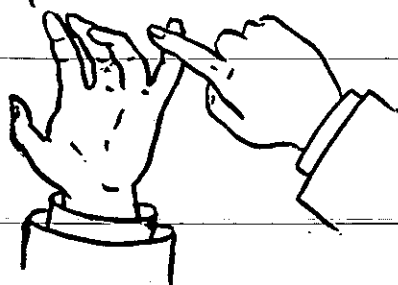
As the wearing parts of the Daugherty do not affect the Alignment, it stays in place much better than on those machines where it is directly affected by the wear of the machine.

Manifolding Qualities .



The mechanical construction is such that we get the full force of the blow—every ounce of pressure exerted is felt on platen. The blow is DIRECT and not REFLEX—Steel type.

Best, but not Beast . .



If you can get a machine that will do as good work—wear as well—for less than you are in the habit of paying, WHY NOT SAVE \$25.00 and TRY A DAUGHERTY for TEN DAYS—before you buy. Write for one to

The Daugherty Typewriter Company

21 SIXTH STREET,
PITTSBURG. - - - - PENNA.

\$75.00

