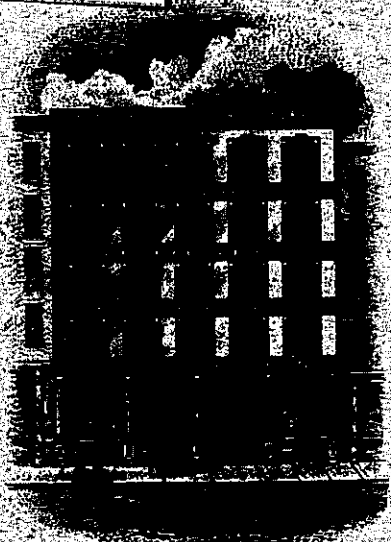


5313



**Samuel Ward Company**  
**MANUFACTURERS**  
**OF**  
**STATIONERY**  
**PAPERS**  
**AND**  
**ENVELOPES**  
 49 & 51 FRANKLIN ST.

**BOSTON,** Feb. 10th, 18

A. W. Tourgee,  
Mayville, N.Y.

Dear Sir: ---In reply to your letter of Feb. 6th, would say the price of 3 lb. 1020 paper would be *2.40* ream of type-writer paper No. 350 *1.35* both letter size. The 1020 we do not have in flat sheets and the only size we have it is 8 by 10, whereas type-writer paper comes 8 by 10 1/2. Would not our Boston Bond suit your purpose just as well as 1020? We send you sample book of our type-writing papers.

Yours respectfully,

Samuel Ward Company.

Bly.

*writing - paper*  
*Send 3 lbs No 582 half sheets*  
*Commercial size, unruled*  
*One Ream Type-writer No. 350, letter size*

|   |      |
|---|------|
| — | 1.65 |
| — | 1.35 |
| — | 3.00 |